

# How to use the Exact dosing System

## Products

### Washrooms

Sani 100 NC  
Sani Cid  
Sani Des  
Sani 4 in 1

### Interior

Sprint 200 NC  
Goodsense Vert

### Floorcare

Jontec 300 NC  
Jontec Tensol

## Safety Equipment Required

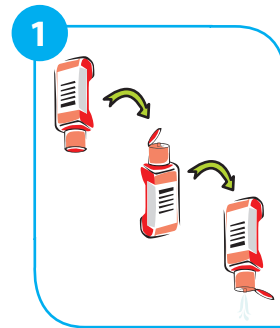


When refilling bottles wear gloves and eye protection



For diluted product wear Gloves for prolonged contact.

### First use



Invert upright dose.

### Subsequent dose



Invert and dose in direction of the arrow. Ensure all bubbles have gone. Do NOT pour.

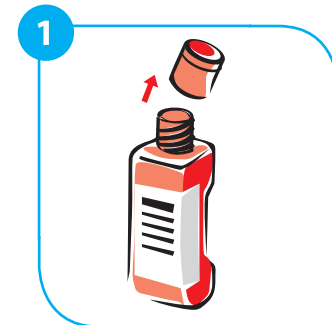


Return to upright allow 5-10 secs.

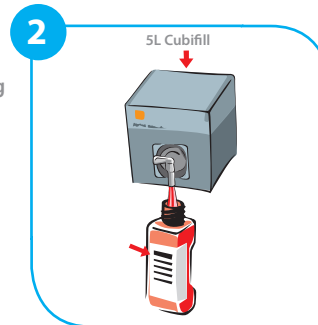


Store upright with cap on.

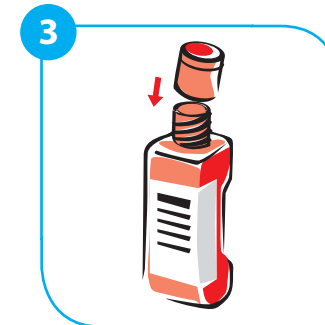
### How to Refill an Exact dosing bottle



Remove the top from the empty dosing bottle.



Fill the empty bottle up to the indicated line, from teh 5L Cubefill.



Replace top.

Refer to product information sheets for more details on products

